



**Mākara Peak**  
Mountain Bike Park  
Mākara Maunga Pahikara

**Mākara Peak Mountain Bike Park  
Supporters Club Inc**

**Annual Report 2023**



# Mākara Peak Supporters Annual Report 2023

## Chair's report

Wow, kiwi at Mākara Peak! Yes, there has been a sighting of kiwi in the park, made possible by the amazing work of Captial Kiwi, landowners and the local community, including the Mākara Peak Supporters. There could be no better confirmation of the original concept to create a mountain bike park within a regenerating native forest than kiwi choosing to visit and hopefully making our park home.

Another exciting year across the park with new tracks opened, including the T4 uphill from the Mākara hill water tank to Vertigo junction, and more recently, completion of the grade 3 downhill Kārearea. Along with a refurbished Varleys (now downhill only) we have new access and alternative loops within the park. Why the name Kārearea? we have a Kārearea (NZ Flacon) that is often seen above this area; hopefully, like the kiwi, they will make Mākara Peak their permanent home. The track report outlines further developments, extensive renovation efforts and potential new tracks.



Our passionate conservation committee and volunteers have once again planted 1800 plants and undertaken extensive weed management, particularly tackling pockets of Tradescantia and the elusive flowering cherry (yes, a lovely garden tree, but a huge weed problem in native bush).

Pest management continued across our track network and greater park.

## Thank you, our fabulous volunteers

We could not achieve this without our fabulous volunteers, who give up their valuable time. You have our sincere thanks and heartfelt gratitude. Your passion, time and resources make Mākara such a fantastic mountain bike park and conservation success. The park would not operate or be what it is



today without you amazing people. And to all the park users who share this wonderful place, thank you for visiting and making the most of Mākara Peak.

### Our Partners

Mākara Peak is a successful partnership between Wellington City Council and Mākara Peak Supporters; this partnership has stood the test of time, in fact, next year is our 25<sup>th</sup> anniversary. With Mark Kent, our full-time ranger, coming on board last year, the park management has moved to another level. Thanks Mark for your tireless efforts, including getting drinking water to the summit, no small task. Mark is part of a passionate WCC team that includes Tim Harkness, Denise Clements and David Halliday, plus many more; you have our sincere thanks for your professionalism and passion for Mākara Peak.



Trails Wellington provides a central voice for Wellington mountain biking, helping to create a strategic framework and world-class network of trails for everyone in the Wellington region. Enabling people to get out and explore our region's natural beauty while boosting our local economy.

Mākara Peak is a proven concept of this approach and model, with over 100,000 people enjoying our park annually.

Being a paid member of Trails Wellington, you directly support Mākara Peak and MPS, with TW contributing \$15,000 from membership fees to MPS annually. This, alongside its substantial capital investment in the park to date, is over \$250,000. Please join Trails Wellington and help Mākara Peak Supporters continue our work alongside WCC that makes the park you love to explore.

Wellington Mountain Bike Club runs an annual Enduro series across Wellington, including a round at Mākara Peak. From this, and proceeds from the Capital Enduro, WMTBC donated a whopping \$16,400 to MPS in the last year. THANK YOU for the support and great work you do bringing awesome events to the Wellington Mountain Bike community. 😊

And thank you also to all our grant funders and individuals who generously donate to the park.



## **We need you!**

Mākara Peak community involvement is a key driver for MPS. We want to ensure our decisions reflect the wider park community and users. Thus, we need you!

Good news, we are very flexible ☺ and would love the opportunity to talk about how you could contribute, providing your individual or user group viewpoint, specific experience or skill. We will work with your personal situation to find a workable solution. Come and have chat with us.

From the general committee:

Kerei Thompson – Chair

Andrew Cooper

Clint Brandon

Evan McCarney

Peter Leman – Secretary

Simon Kennett

Stewart Glynn – Treasurer



Ngā mihi nui for being part of the Mākara Peak community

Kerei Thomson  
Chair

## Tracks report

The past year has seen the Mākara Peak trail network continue to grow and enhance through the mahi of the Mākara Peak Supporters Club and our partners Wellington City Council (WCC) and Trails Wellington.



Following the completion of upper Pōhatu in December 2022, two other significant additions to the trail network have been completed over the past 12 months. The lower section of T4 was completed and Kārearea built. The new lower section of T4 connects with the existing T4 uphill track to provide park users with a fantastic new entry to the park from the Skyline track or Mākara Road or as another loop option within the park. Kārearea, a new grade 3 downhill track sandwiched between lower T4 and Varleys, adds a fun new G3 to the northwest, complementing Varleys and a future G5 track planned for the northern side of Varleys. All able to sessioned multiple times via T4.

Both lower T4 and Kārearea were funded by WCC and built by TGL Contracting.

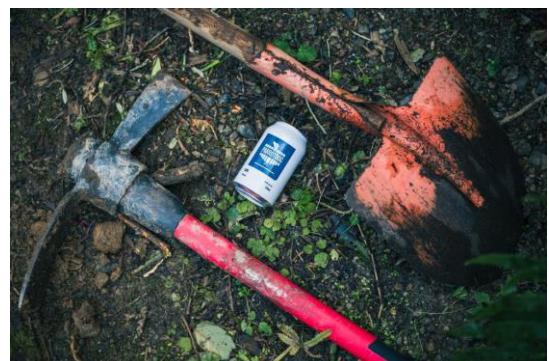


An upgrade of Whā Out was completed under a joint approach between MPS and WCC, with both organisations sharing the cost for contractor Total Trail Solutions to refurbish the first half of the track and the Sunday volunteers tackling the refurbishment of the second half of the track.

Current WCC funded major refurbishments underway in the park at present include Koru (by contractor La Podge) and Lazy Fern (by Slack Trails aka Ricky Slackboy Pincott).

## Volunteer work

Mākara Peak volunteers have continued their Sunday afternoon rituals of trail building and refurbishment throughout the year, rewarded with a cold soft drink or beer (kindly donated by Parrot Dog) and a sausage (kindly donated by Gipps St Butchery) at the end of each dig.





The Sunday digs over the last 12 months have continued to focus on refurbishment of existing trails while we wait for WCC to navigate the new Significant Natural Areas (SNA) rules and the extra compliance these entail to enable us to proceed with some new significant track builds.

The volunteers completed the upgrade of the G4 line of Live Wires with the creation for a new, spicier alignment in the lower section. Whā Out, Vertigo, Varleys and Ridgeline have also benefited this year from the TLC provided by the merry band of Sunday volunteers.



The dedicated grade 5/6 volunteers led by Scotty Newman have continued their regular maintenance efforts to ensure the rest of the grade 5 and 6 trails continue to frighten and thrill.

Ranger Mark has also been supported by a new group of regular volunteers for his Thursday trail maintenance sessions which is yielding great results around the park.

### **Corporate groups**

Ranger Mark hosted corporate volunteer work parties from Spark, Westpac and EECA during the year, helping with a major upgrade of Smokin. Mark has also been helping the outdoor education class from Onslow College learn valuable skills through the upgrade of Big Tom's Wheelie. Thank you to those organisations for their generous mahi.

### **Track maintenance**



Thanks to the continued generous sponsorship from Bark Landscaping and funding from the Mākara Peak Supporters, the trails in the park have continued to benefit from the Bark team who spend one day a week in the park keeping on top of vegetation clearing and drainage maintenance.

Regular trail maintenance has also continued through Ranger Mark's regular Thursday sessions remediating the grade 2 and 3 trails around the park. A big focus of these sessions, aided by the corporate groups has seen a top to bottom refresh of Smokin.



The benefit of this regular maintenance is demonstrated by the generally high standard of the track conditions throughout the park despite the new normal of heavier and more frequent rainfall.

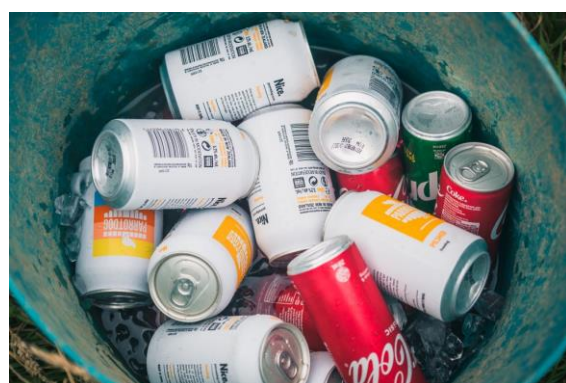
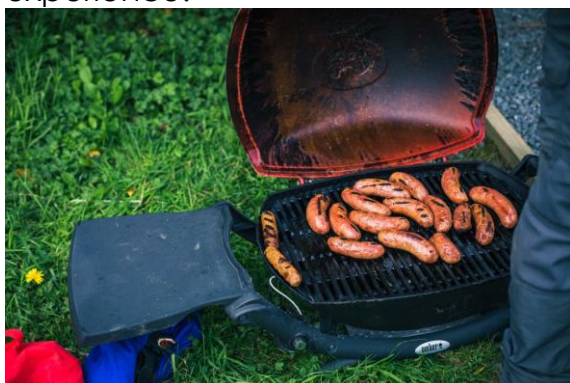
We would like to thank the riding community for heeding requests to stay off the tracks in very wet weather. Short term pain (of not riding) delivers long term gain in mint track conditions.

### **The next 12 months**

Over the next 12 months the trail network will have some exciting additions:

- Building a new section of Live Wires that will bypass the Skills Area.
- Planning and commencement of a new grade 4 downhill track into the Trickle Falls valley.
- Planning and commencement of a new grade 5 track on the north side of Varleys.
- Planning and commencement of the prequel to Supa Kanuka.
- New alignment to remove the steep section in the first half of Magic Carpet.
- Designing a rebuild of the Skills Area.

Thanks for all the hard work that the volunteers and the tracks sub-committee have put into the park over the last 12 months. The support from WCC, in particular Ranger Mark, Trails Wellington and our regular volunteers has helped to continue to develop Mākara Peak into a world class riding experience.





## **People – Tracks sub-committee**

Andrew Cooper – Tracks Lead

Clint Brandon – Tracks Volunteers Motivator and bbq tong master

Dan Taylor – Grade 5 & 6 tracks specialist

Lisa Ng – Tracks volunteer and photographer extraordinaire

Scott Newman – Grade 5 & 6 tracks lead

Simon Hayman – Tracks volunteer and lifter of large objects

Simon Kennett – Mākara Peak guru and interface with Conservation committee

Simon O'Brien – Tracks volunteer and ideas guy

Ngā mihi

Andrew Cooper

Tracks Lead Mākara Peak Supporters





## Conservation Report

**Conservation highlights of the last year include the return of kiwi to the park, a massive boost in weed control, and the completion of planting in the goat exclosures at the south end of the park.**

### Trees

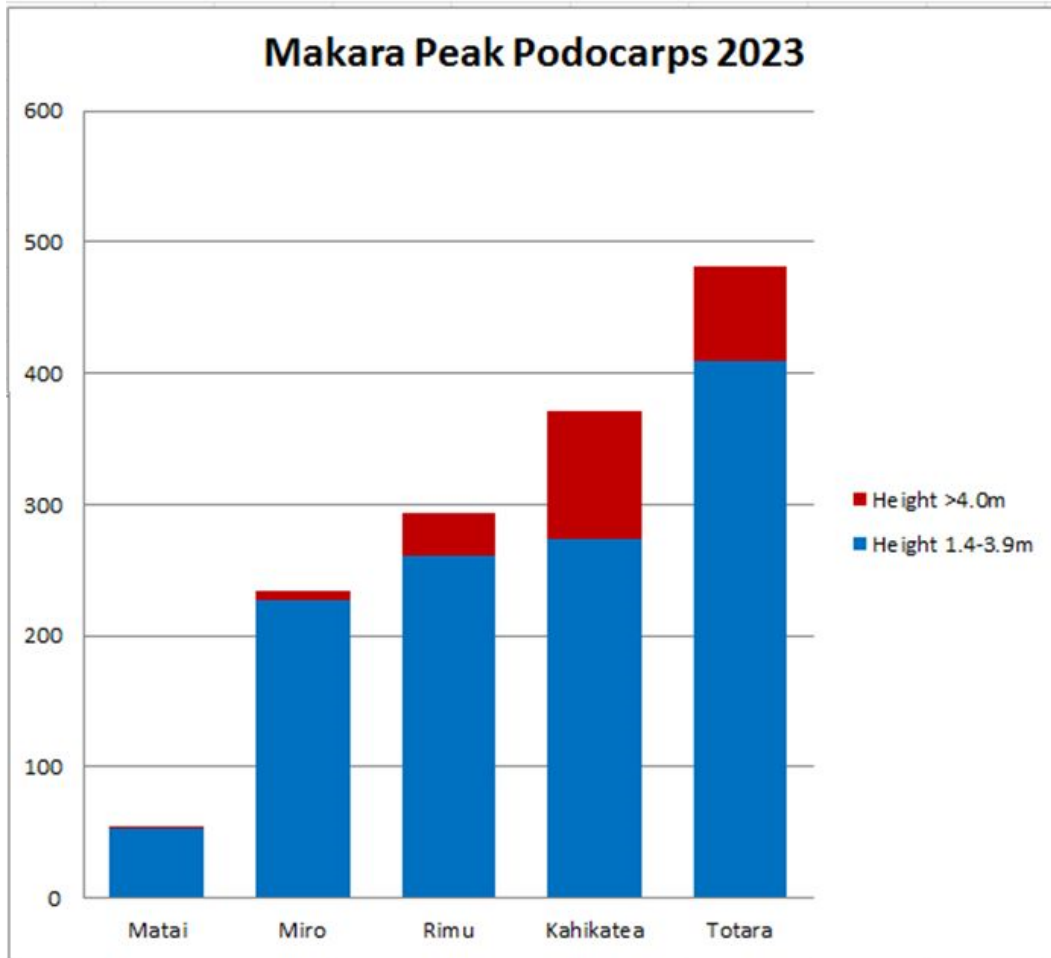
The main goals for forest restoration in 2023 were planting alongside tracks in the revamped north end of the park, infill planting in the exclosures at the south end of the park, and mitigation planting alongside the wide bits of the top section of Pōhatu. We also managed to plant out the last sizeable clearing on Ridgeline.

All up, about 1,800 seedlings were planted, with a mix of 30-odd species helping increase biodiversity in the park. Most were supplied free of charge by WCC's Berhampore nursery and Forest & Bird. We purchased a few rarer species, thanks to general donations.



Every five years we do a sapling survey of some of the key species, to check we're on track to achieve restoration of a mixed podocarp/broadleaf forest (and maintain the lightwells of the saplings, as we go). This was one of those years. We found the number of podocarp saplings in the park over the height of 1.4m has doubled over the last five years, and Northern rata have increased from 85 to 229. Higher than average rainfall over the last couple of summers has been a big help.





## Pest Control

The Katch22 group continues to do awesome work in keeping pest numbers down, managed as usual by Andrew McLellan. In terms of raw numbers for the 2022/23 year, they've caught:

- 8 Stoats
- 24 Weasels
- 40 Hedgehogs
- 48 Possums (many more are eliminated with bait stations managed by GWRC)
- 403 Rats
- 245 Mice

In addition, we had 100 strikes in our Goodnature A24 traps (rats, mice and mustelids).



Apart from an increase in weasel catches, the catch numbers are similar to last year. It's possible that greater stoat control in the adjoining Capital Kiwi area to the west has resulted in an increase in weasels.

Total pest animals killed by KATCH22 over the last decade is now up to 6,735. Thanks again to the committed Katch22 group for their work, and to WCC for donating most of the supplies we need for maintaining the bait stations throughout the park. This is essential to the survival of native wildlife in the park.



Feral pigs and goats have continued to carry out raids into the park from time to time over the last year. Council's hunting contractor, Trent, heads in regularly to keep their numbers down.

This year, we also used funding from Zac Pearson's endowment fund to repair and upgrade the fencing along our northwestern boundary, to make it more difficult for pigs, goats, horse and sheep to enter the park and munch our seedlings.

## **Weed control**

Following up on Kaitiaki o Ngahere Ltd's 2022 weed survey we engaged them to tackle most of the high-priority weeds in the park, thanks to support from WCC and a Natural Environment Fund grant.

In addition to that, we established a volunteer Weedbusters group which (along with help from Conservation Volunteers NZ and the William Pike Challenge) succeeded in nuking the following weeds in the 2022/23 year:

- 1 Agapanthus
- 19 Arum Lily
- 18 Blackberry
- 57 Buddleia
- 654 cherry tree
- 30 Cotoneaster
- 101 Darwins barberry
- 0.5m<sup>2</sup> English ivy
- 12 German ivy
- 520 Himalayan balsam
- 142 Himalayan honeysuckle
- 3 Holly
- 6 Hydrangea
- 1 Licorice plant

3 Macrocarpa  
22 Old mans beard  
24 Pines  
3 Sycamore  
357m2 Tradescantia  
1 Willow

All of these introduced species compete with native species and inhibit natural regeneration. Some had the potential to degrade the forest forever. Getting on top of them has been a massive achievement.



## **Birds!**

Results from WCC's latest bird count came out in May and indicated that, after 20 years, we finally have korimako/bellbird back in the park. Since then, their beautiful call has been heard at both the north and south ends of the park, and photographs of them have been taken by the picnic area at the end of Starfish.

Alas, our family of titipounamu/rifleman and lone toutouwai/NI Robin have vanished.

As far as our feathered fauna is concerned, our most exciting event of the year has to be the sighting of two kiwi in the middle of the park in September. This follows years of preparation by Capital Kiwi (and many community groups) and the release of 63 kiwi in the hills west of Mākara village over the last 10 months. There are many more on the way, so we now need people to keep their dogs on leads more than ever. We are also working with Capital Kiwi to raise awareness amongst our rural neighbours.

Is there any other MTB park in the country where you have a chance of encountering kererū, kaka, korimako, kākārīki, kārearea and kiwi?!





## Conservation people

In 2022/23, hundreds of volunteers contributed 2,470 hours to the ongoing conservation wins Mākara Peak enjoys. Their efforts are largely organised by Ranger Mark Kent and the conservation subcommittee, including:

- Andrew McLellan
- Evan McCarney
- Sarah Bramwell,
- Miro Kennett
- Simon Kennett, and
- Peter Leman

As our mahi has increased this year, to include more weed and pest control, we're looking for some new members to help us with communications, volunteer support, and chairing the conservation subcommittee. Please get in touch with anyone on the subcommittee if you're interested in helping out.



## Wellington City Council – Park Ranger report



In a world where mountain biking parks strive for greatness, Mākara Peak has emerged as a beacon of achievement. Our vision to become a world-renowned mountain biking haven has transitioned from dreams to reality. It's not just a park; it's a destination sought after by riders, walkers, and runners alike. Over the past year, we've witnessed a remarkable influx of approximately 110,000 visitors, all eager to explore our rejuvenating forests and perhaps catch a glimpse of native avian inhabitants, unseen for decades.

The true essence of Mākara Peak's success is founded in the dedication of the Mākara Peak Supporters and the broader community. Their collective efforts over the past quarter-century, in collaboration with the Wellington City Council, stand as a testament to what can be accomplished when the goal extends beyond just another bike park to create a sanctuary where people can revel in nature and experience a diverse array of trails.

Since 1998, our journey from a disused farm to a world-class mountain bike park has been monumental. Through a partnership approach and the combined efforts of WCC, contractors and volunteers, we've created over 50 kilometers of trails. Thousands of trees have been established, while invasive weed species have been banished. The removal of four legged predators from the park are thanks to the hard work of Katch 22 volunteers and the contracted services of the WCC hunter. But perhaps the most awe-inspiring accomplishment has been the return of kiwi, our national treasure, to the Peak. Thanks to the vision and mahi of Capital Kiwi to bring this taonga back into Wellington's hills and in combination with the relentless trapping effort of our volunteers, kiwi have made their way from the surrounding valleys into the mountain bike park. So, on that note, a reminder that dogs must be on leads in Mākara Peak.

The WCC ecology team continues to support the remarkable efforts of the Mākara Peak Supporters' conservation team, engaging in essential weed control efforts and providing native plantings to bolster the reforestation



vision for the park. Simultaneously, they offer vital assistance to the volunteer trappers by providing essential supplies for their dedicated mahi.



As the dedicated Park Ranger for Mākara Peak, my year has been filled with opportunities to bring the Mākara Peak 10-year master plan to life. Whether engaging in conservation initiatives, overseeing trail development, or managing park infrastructure and maintenance, working closely with our dedicated volunteers has been exceptionally rewarding.

Our Mākara Peak committee, along with conservation and trail subcommittees, has demonstrated unparalleled passion and energy in driving the success of our park. We are indeed fortunate to have such a committed group of volunteers who have dedicated their time to the betterment of Mākara Peak and our amazing city.

Over the past 12 months, Westpac, EECA, and Spark, have provided invaluable support by volunteering their staff for trail refurbishments and tree planting. Thanks to their collective efforts, we have been unable to accomplish the transformation of the Smokin trail. Volunteers from Beca helped to plant out the newly completed Upper Pōhatu trail.

In addition, students from Onslow College's outdoor education class took on the task of refurbishing Big Toms Wheelie. Their project not only contributed to trail improvements but also hinted at the possibility of future trail designers emerging from their ranks. It's a testament to the positive impact of hands-on education.



Our partnership with Trails Wellington has significantly enriched mountain biking across the city. Upper Pōhatu, supported by their contributions, has become another iconic trail within Mākara Peak. It's no wonder Mākara Peak has earned its reputation as one of the finest riding destinations in the motu.

## **Mākara Peak Master Plan Achievements for the 2022/2023 Financial Year**

As we delve into the highlights of our accomplishments over the past financial year, the investment of \$277,000 in capital works funding from WCC has played a pivotal role in bringing several Master Plan projects to fruition.

The summit water tank, a long-awaited addition, has finally become operational, thanks to an off-grid solar power supply. We extend our thanks to Kordia for their support in this project, which now quenches the thirst of countless park visitors.



Whā out received some much-needed remediation work, facilitated by funding from the Mākara Peak supporters and WCC. The refurbishment, skillfully executed by Andrew from Total Trail Solutions, was further enhanced through the dedication of our Mākara Peak supporters' crew.

A game-changer for the park, the T4 climbing trail from Mākara Hill Road Summit was completed just in time for the holiday season, marking another accomplishment in line with the Master Plan. This transformative trail was constructed through the partnership of WCC and TGL Contracting.

Next in line, we proudly introduced the Grade 3 Kārearea trail, completed in July 2023. This trail's introduction has opened up exciting opportunities for riders to explore Grade 3 and Grade 4 trails at the park's northern end. TGL Contracting undertook the construction of this remarkable addition.

### **Master Plan Projects for the Financial Year ahead**

Turning our gaze toward the future, the Master Plan funding for the upcoming financial year will be channeled towards trail refurbishment and maintenance. The Frame Group has been enlisted to design pivotal Master Plan trail projects, while Boffa Miskell will ensure minimal environmental impact through the compilation of ecology reports and the securing of necessary consents in accordance with the new Significant Natural Area (SNA) regulations.

Anticipated projects include the commencement of construction for the second half of the Super Kanuka loop as a contractor build, alongside the volunteer-led construction of a Grade 4 trail leading to Trickle Falls. Both of these projects are poised to commence in 2024.

This year, our primary focus centers on the rejuvenation of the Grade 2 trail network. Recent renovation work on Lazy Fern, with the support of WCC Master Plan funding amounting to \$24,000, has successfully restored it to a genuine Grade 2 trail. This refurbishment promises to bring smiles to the faces of riders who are just venturing into the sport.

An iconic Mākara Peak trail, Koru trail, originally established over two decades ago, is currently undergoing renovation work. Upon completion, this 2-kilometer trail will offer a consistent Grade 2 experience throughout its length, forming a fantastic Grade 2 loop when linked with Lazy Fern. The trail upgrade is being carried out by the La Podge Trail Crew, with funding support from the WCC reserves budget.

Early in 2024, we will be introducing new map boards, enhancing navigation within the park. We have also been collaborating closely with Wellington Free Ambulance to identify and install signage at emergency pick-up points across Mākara Peak. This initiative aims not only to expedite response times for patient care but also to provide emergency services with improved navigation options within the park.



### **Trail Maintenance program**



Our ongoing commitment to weekly trail maintenance has yielded resounding success. As Ranger, I have been supported by a dedicated mid-week volunteer team, who have given up countless hours to help preserve and lift the condition of our trail network.

Our trail maintenance team is the unsung hero of Mākara Peak, dedicating an impressive 40 hours per week to ensuring the trails remain in pristine condition. With the ever-increasing number of park visitors, we're actively seeking ways to expand and fortify our maintenance program.

In our quest for excellence, we're delving into the realm of mechanized maintenance and experimenting with innovative products to create sustainable trail surfaces. These efforts are all part of our plan to enhance our capacity to maintain the park's trails. The future of our trail network is shining brightly as we work tirelessly to keep them in top-notch condition.

We are fortunate to receive generous sponsorship from Bark and funding from the Mākara Peak Supporters, which have significantly bolstered our



weekly maintenance efforts. The Bark team can be found diligently working on the tracks every alternate Friday, tending to trackside vegetation and surface maintenance.

The dedicated team from the WCC tracks unit plays a pivotal role in maintaining the ongoing excellence of our trails. Their springtime trail cutting, year after year, adds a significant boost to the park experience, ensuring that your trail ride remains smooth and unhindered.

Finally, a massive thank you to all the volunteers who have spent thousands of hours caring for Mākara Peak, be it planting, trapping or trail building, you're awesome. The park would not be what is today without your mahi and dedication.



Happy trails

Mark Kent

Mākara Peak Park Ranger

## 2022/2023 Treasurer's Report

### Financial statements

#### Income

- Income for the year to 30 June 2023 was \$66k – a rise of \$13k (24%) from 2021/22.
- The main source of income was grant funding. In total we received almost \$22.5k, including nearly \$10k from the Nikau Foundation (Zac Pearson Fund), \$7k from WCC for weed control, \$5k from the Ministry for Primary Industries from the 1 Billion Trees Fund, and \$500 from Wellington Zoo towards the Kōhanga.
- Donations totalled \$22k, including \$16.5k from the WMTBC from the proceeds of various enduro events and \$1k from Revolve. Shoutouts also go to Bikehubb and TJ Bright.
- A special mention goes to Trails Wellington for their quarterly payments under our memorandum of understanding (\$15k pa). A late invoice issued means one payment has been recorded in 2023/24.
- Thanks also to Bark Ltd for their generous sponsorship of \$10k.

#### Expenditure

- Our operating expenses for the year were \$52k.
- The biggest area of expense was general track maintenance and surfacing (\$29k). A big effort went into weed control this year with \$14k being spent.
- These were also the biggest areas of expenditure last year, which shows the continued focus we have on maintaining the park to a high standard.

#### Overall

We made a net profit of almost \$14k during the year and finished with total assets of \$92k, up from \$78k in 2021/22.

The total asset position comprises \$50k in the current account, \$40k on term deposit, accounts receivable balance of -\$4k (a timing issue due to the late invoice), fixed assets of \$3.8k (shed, signage, and tools / machinery) and a net GST liability (refund due from Inland Revenue) of approximately \$2k.

Stewart Glynn  
Treasurer

# Balance Sheet

## Makara Peak Mountain Bike Supporters Incorporated

As at 30 June 2023

30 JUN 2023

<b>Assets</b>	
<b>Bank</b>	
Makara Peak	50,418.63
<b>Total Bank</b>	<b>50,418.63</b>
<b>Current Assets</b>	
Accounts Receivable	(4,312.50)
Term Deposit Account	40,000.00
<b>Total Current Assets</b>	<b>35,687.50</b>
<b>Fixed Assets</b>	
Shed	5,000.00
Accumulated Depreciation on Shed	(2,500.00)
Signage	11,747.10
Accumulated Depreciation on Signage	(11,019.95)
Tools and Machinery	12,008.43
Less accumulated depreciation on Tools and Machinery	(11,461.20)
Website	5,416.51
Accumulated depreciation on website	(5,416.51)
<b>Total Fixed Assets</b>	<b>3,774.38</b>
<b>Total Assets</b>	<b>89,880.51</b>
<b>Liabilities</b>	
<b>Current Liabilities</b>	
GST	(2,099.21)
<b>Total Current Liabilities</b>	<b>(2,099.21)</b>
<b>Total Liabilities</b>	<b>(2,099.21)</b>
<b>Net Assets</b>	<b>91,979.72</b>
<b>Equity</b>	
Current Year Earnings	13,981.69
Owner A Funds Introduced	9,612.67
Retained Earnings	68,385.36
<b>Total Equity</b>	<b>91,979.72</b>



# Profit and Loss

## Makara Peak Mountain Bike Supporters Incorporated For the year ended 30 June 2023

2023

<b>Income</b>	
Grants	22,408.09
Donations	21,722.03
Sponsorship	10,000.00
Interest Income	686.30
Other Revenue	11,250.00
<b>Total Income</b>	<b>66,066.42</b>
<b>Expenses</b>	
Advertising	466.28
Bank Fees	120.00
Conservation - Pest control	868.57
Conservation - Plants	624.20
Conservation - weed control	14,077.97
Consulting & Accounting	1,004.44
Depreciation	711.88
Food and Beverage / Work Party	1,231.76
General Expenses	561.98
Insurance	1,005.00
Minor Assets under \$500.00	2,037.07
Telephone & Internet	158.82
Tracks - maintenance and surfacing	29,172.10
Tracks - trail building materials	44.66
<b>Total Expenses</b>	<b>52,084.73</b>
<b>Profit / (Loss)</b>	<b>13,981.69</b>